



**Active high-performance line array system for optimised reproduction of speech and music in acoustically problematic rooms.** Various factory-configured presets and volume settings can be accessed. Precise broadband vertical 20° nominal sound bundling is achieved through the acoustical interlinking of two slightly curved, consecutively arranged line arrays. Combined with the horn guide within the high range, this special arrangement additionally ensures exceptionally homogeneous and symmetrically horizontal 100° directivity. GL 24 systems are particularly suitable for individual applications up to a distance of 25 metres and can also be used as a down-fill together with the GL 16i.

## PRODUCT SPECIFICATIONS

<b>Speaker Components</b>	6 x 6,5" Neodym 24 x 1" Neodym
<b>Description</b>	Two-Way Line Array System
<b>Power</b>	2 x 750 W EIA / 195-250 VAC
<b>Max Line Input</b>	+ 21 dBu
<b>DSP</b>	32 bit RISC
<b>Internal Signal Path</b>	32 bit fixed-point, 64 bit accumulator 64 bit IIR-coefficients
<b>AD / DA</b>	24 bit / 48 kHz
<b>Latency</b>	1.54 ms (analog in to analog out)
<b>SPL max</b>	>130 dB
<b>Frequency Range</b>	80 Hz - 20 kHz (Flat-Preset)
<b>Connectors</b>	Neutrik XLR in/out Neutrik PowerCon in/out
<b>Coverage</b> horizontal / vertical	100° x 20°
<b>Handles</b>	2 x handles on backside
<b>Rigging</b> flying points	9 x M10
<b>Fittings</b>	35 mm pole mount
<b>Weight</b>	22 kg
<b>Size</b> height x width x depth	106,0 x 19,0 x 24,5 (34,3) cm
<b>Order No.</b>	<b>00520/dp</b>



GL 24 Horn.

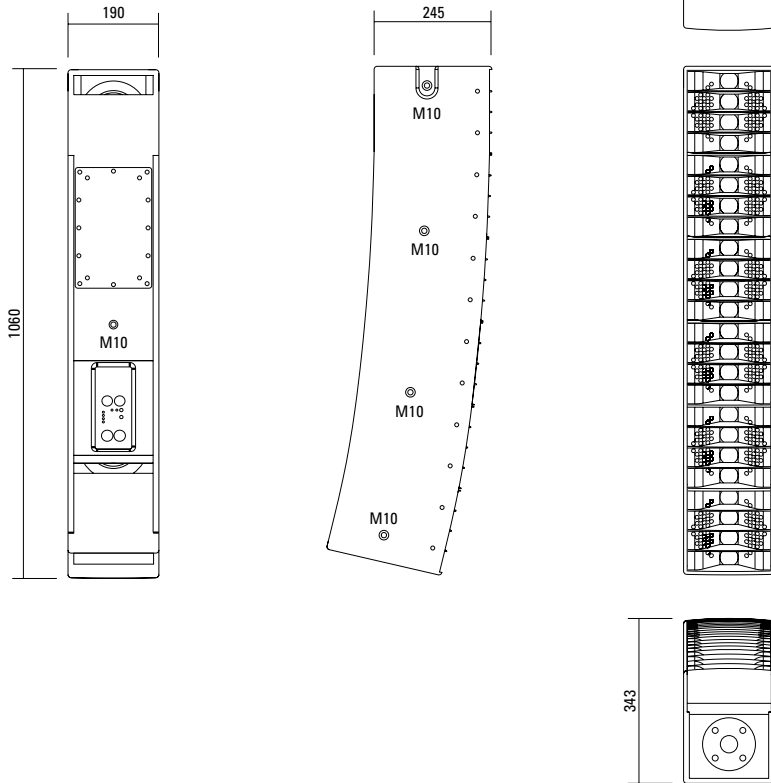


Flying Bracket.



Integrated fittings for easy connection.

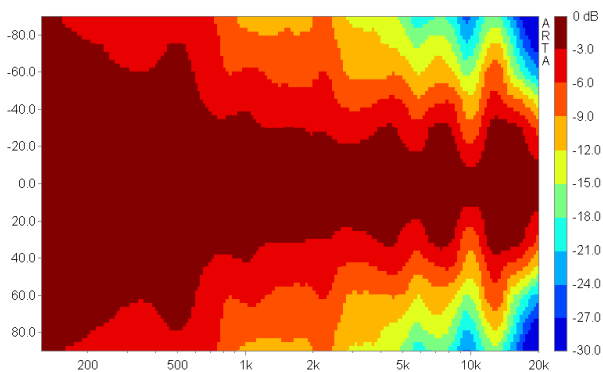
## DIMENSIONS



## COVERAGE PATTERNS

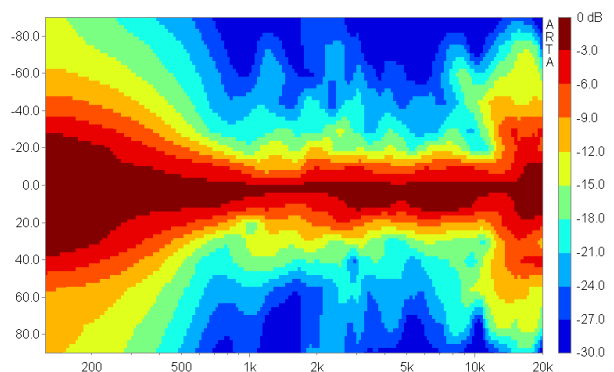
### GL 24 horizontal - 2D Directivity Plot

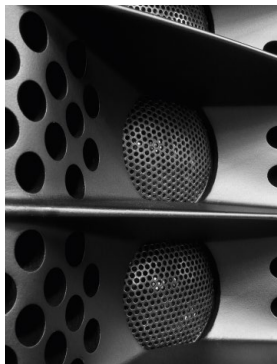
100° horizontal dispersion for good performance in wide venues.



### GL 24 vertical - 2D Directivity Plot

The j-curling leads to an unsymmetrical vertical dispersion, narrower in the upper section for long throw and wider in the lower section for near field.

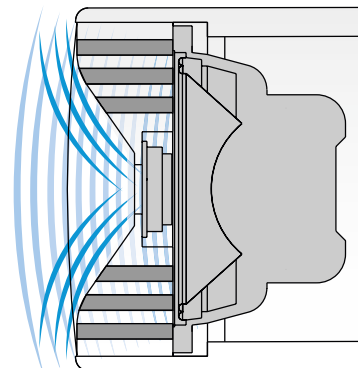




### AMR® PRINCIPLE

The horn for the 1" driver (1" tweeter) contains integrated channels which pass through the sound waves of the low-mid speakers behind it. These channels are sealed in the frequency range of the HF driver due to the air mass inside the channels acting as a reflector (AMR = Air Mass Reflection).

The low-mid speakers operate on an acoustical band pass with a center frequency close to the crossover frequency, leading to a smooth horizontal dispersion over a wide frequency range. Another asset is the extremely compact construction of this design.



## APPLICATIONS



Flying Cradle.



Integrated 35 mm pole mount.



Flying Bracket.



**GL 24 dp / G Sub 1501**  
For applications up to 25 m distance.



**GL 16i dp 1000 / GL 24 dp / G Sub**  
For applications up to 40 m distance.



**2 x GL 16i dp 1000 / GL 24 dp**  
For applications up to 80 m distance.

**The GL 24 dp features integrated digital amplifier electronics with a DSP controller. Various factory-configured presets and volume settings can be selected.**

High-grade electronic components from the industrial sector and a first-class circuit design ensure excellent audio quality with low distortion and effectively minimise static noise. Highly efficient and “intelligent” limiter systems ensure optimum protection against overload, without restricting the possibilities offered by this high-performance sound system.

#### XLR

Symmetrical analog input  
Max. Input +21dBu  
HF- and DC-filter.  
Virtual ground lift

#### Level

Adjustment in 3 dB steps  
(-6 dB to +3 dB)

#### Mute LED

Red light when the system is muted or under technically crucial conditions.

#### Limit LED

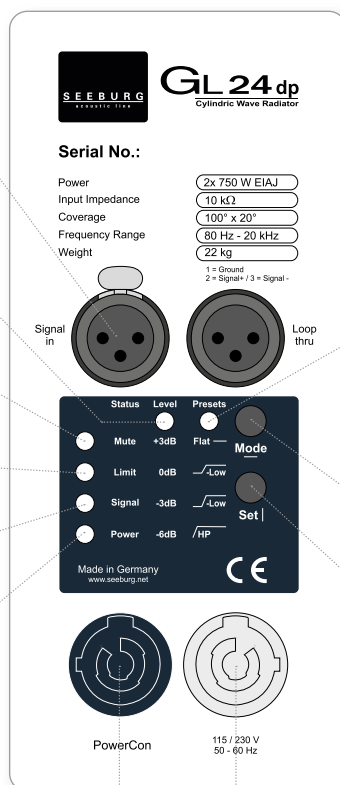
Yellow light when the limiter is restricting the level.

#### Signal LED

Green light when the input signal exceeds -20 dBu

#### Power LED

Green light when the system is switched on.



#### Presets

##### Flat

Standard setting with linear frequency response for stand-alone use.

##### Low

Slight reduction of low / mid range frequencies for combination with one GL 16 system.

##### Low

Strong reduction of low / mid range frequencies for combination with several GL 16 systems.

##### HP

120 Hz high pass filter for combination with subwoofers.

#### Mode - key

Changing to control modes  
Status / Level and Presets.

#### Set - key

Setting of various values and  
Mute on / off.

#### PowerCon (blue)

Power supply  
195-250 VAC.

#### PowerCon (grey)

230 VAC / 16 A max.  
loop thru connector.

### Flying Cradle



for one unit GL 24 or  
for up to 6 units GL 16  
Order No. **01354**

### Flying Bracket



for GL 24  
incl. accessories:  
4 x M10 x 20 handle screws  
Order No. **01352/GL24/set**

### Handle Screw



for flying brackets, adjustable,  
M10 x 20  
Order No. **08375/20**

### Flange



balanced, 2 x M10, 35 mm Ø,  
for up to 2 x GL speakers and  
flying bracket  
Order No. **08126/bal**

### Flange



M20 x 35 mm— for flying bracket  
G3, GL 16, GL 24, K 24  
Order No. **08127/nut**

### Doughty Trigger Clamp



for flying brackets,  
SWL 200 kg  
Order No. **01222**

### Safety Steel Rope

4 mm - 50 cm  
Order No. **01376**



### Chain fastener

VBS 7 mm  
Order No. **01378**



### Ring Screw

M10— DIN 580,  
black zinced  
Order No. **73700**



### TV Spigot

10 mm internal thread,  
28 mm Ø  
Order No. **08128**



### Connection Bar

GL 24 -> GL 16c  
Order No. **08158**



## ACCESSORIES GL 24 dp

### Wall Mount



for one single GL 16 / GL 24 /  
A 2 / A 3 / L-Series  
Order No. **03034**

### Spacer



for Wall Mount (03034)  
polyurea coated  
Order No. **03034/spc**

### Wall Mount



for U-brackets, 40 kg max., incl. screws  
(M10 x 70 mm socket head screw,  
M10 hex lock nut and flat washer)  
for 15" speakers  
Order No. **08130/F/400**

### Speaker Stand



Wind up for speaker enclosure,  
50 kg max., height 129 to 204 cm  
Order No. **03011**  
50 kg max., K&M  
Order No. **03010**

### Hybrid Cable System



PowerCon-PowerCon / XLR-XLR  
2,5 m Order No. **08462**  
5 m Order No. **08464**  
10 m Order No. **08466**  
15 m Order No. **08468**

### Bag



for one unit GL 24  
Order No. **01233**

### Raincover



for GL 24  
Order No. **01233/outdoor**

### Stretchcover



for GL 24  
Order No. **01233**

### Flightcase



for 2 units GL 24,  
inserts for accessories, compact size,  
heavy duty version, PVC coated,  
100 mm blue wheels  
Order No. **16013/pro/T**

